

Anti-Somatostatin Receptor 2 antibody

[UMB1] ab134152



10 References | 3 Images

Overview

Product name	Anti-Somatostatin Receptor 2 antibody [UMB1]
Description	Rabbit monoclonal [UMB1] to Somatostatin Receptor 2
Tested applications	WB, IP, IHC-P
Species reactivity	Reacts with: Mouse, Rat, Human
Immunogen	Synthetic peptide corresponding to residues on the C-terminal of Human Somatostatin Receptor 2 (P30874).
Positive control	U937, INS-1, andsstr2 transfected HEK293 cell lysates, Human pancreas & brain tissue
General notes	Produced under U.S. Patent No. 5,675,063.

Properties

Form	Liquid
Storage instructions	Shipped at 4°C. Upon delivery aliquot and store at -20°C. Avoid repeated freeze / thaw cycles.
Storage buffer	pH: 7.40 Preservative: 0.01% Sodium azide Constituents: 50% Glycerol, 0.05% BSA
Purity	Tissue culture supernatant
Clonality	Monoclonal
Clone number	UMB1
Isotype	IgG

Applications

Our [Abpromise guarantee](#) covers the use of **ab134152** in the following tested applications.

The application notes include recommended starting dilutions; optimal dilutions/concentrations should be determined by the end user.

Application	Notes
WB	1/1000 - 1/10000. Predicted molecular weight: 41 kDa. Can be blocked with Somatostatin Receptor 2 peptide (ab171899) .
IP	1/10 - 1/100.
IHC-P	1/100 - 1/250. Perform heat mediated antigen retrieval with citrate buffer pH 6 before commencing with IHC staining protocol.
Application notes	Is unsuitable for Flow Cyt or ICC.

Target

Function	Receptor for somatostatins-14 and -28. This receptor is coupled via pertussis toxin sensitive G proteins to inhibition of adenylyl cyclase. In addition it stimulates phosphotyrosine phosphatase and PLC via pertussis toxin insensitive as well as sensitive G proteins. In RIN-5F cells, this receptor inhibits calcium entry by suppressing voltage dependent calcium-channels.
----------	---

Product Datasheet

Tissue specificity	Cerebrum and kidney. In lesser amounts in jejunum, colon and liver.
Sequence similarities	Belongs to the G-protein coupled receptor 1 family.
Cellular localization	Cell membrane.

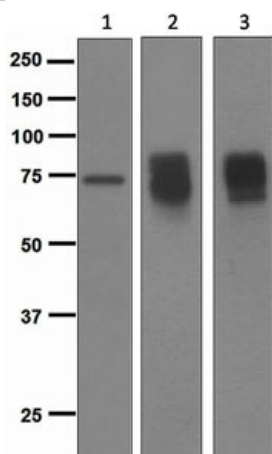
Target information above from: UniProt accession  [P30874](#)

The UniProt Consortium

The Universal Protein Resource (UniProt) in 2010

 [Nucleic Acids Res. 38:D142-D148 \(2010\)](#) .

Anti-Somatostatin Receptor 2 antibody [UMB1] images



Western blot - Anti-Somatostatin Receptor 2 antibody [UMB1] (ab134152)

All lanes : Anti-Somatostatin Receptor 2 antibody [UMB1] (ab134152) at 1/1000 dilution

Lane 1 : U937 cell lysates

Lane 2 : INS-1 cell lysates

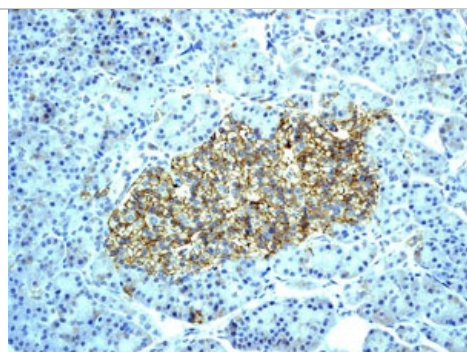
Lane 3 : sstr2 transfected HEK293 cell lysates

Lysates/proteins at 10 µg per lane.

Secondary

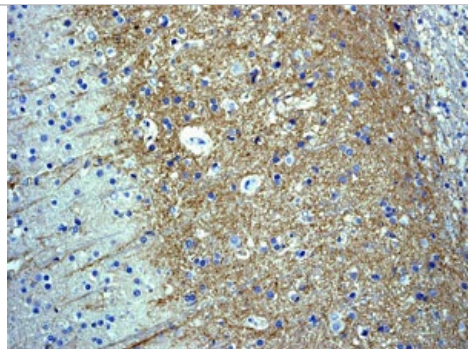
HRP labelled goat anti-rabbit at 1/2000 dilution

Predicted band size : 41 kDa



Immunohistochemistry (Formalin/PFA-fixed paraffin-embedded sections) - Anti-Somatostatin Receptor 2 antibody [UMB1] (ab134152)

Immunohistochemical analysis of paraffin embedded Human pancreas tissue labelled with ab134152 at 1/100 dilution.



Immunohistochemistry (Formalin/PFA-fixed paraffin-embedded sections) - Anti-Somatostatin Receptor 2 antibody [UMB1] (ab134152)

Immunohistochemical analysis of paraffin embedded Human brain tissue labelled with ab134152 at 1/100 dilution.

Please note: All products are "FOR RESEARCH USE ONLY AND ARE NOT INTENDED FOR DIAGNOSTIC OR THERAPEUTIC USE"

Our Abpromise to you: Quality guaranteed and expert technical support

- Replacement or refund for products not performing as stated on the datasheet
- Valid for 12 months from date of delivery**
- Response to your inquiry within 24 hours
- We provide support in Chinese, English, French, German, Japanese and Spanish
- Extensive multi-media technical resources to help you
- We investigate all quality concerns to ensure our products perform to the highest standards

If the product does not perform as described on this datasheet, we will offer a refund or replacement. For full details of the Abpromise, please visit <http://www.abcam.com/abpromise> or contact our technical team.

Terms and conditions

- Guarantee only valid for products bought direct from Abcam or one of our authorized distributors
- **Regional variations to our Abpromise may apply to the following countries: China, Korea, Singapore, Malaysia, Taiwan and Thailand, which operate a 120 day guarantee. Please contact your regional office for further details

Visit us at: www.abcam.com